

1. MOBILE WORKSHOP UNIT

The purpose of the mobile workshop is to service and repair

- Submersible Pumps,
- Engine
- Generators,
- Vehicles, Truck
- General purpose repair
- Pipe line systems etc. at construction sites (water supply & irrigation projects) located away from nearby town regular service and repair facilities.

Mobile workshop unit mounted on 4 x 4 truck, to service and repair any mechanic and hydraulic vehicle. Furnished with

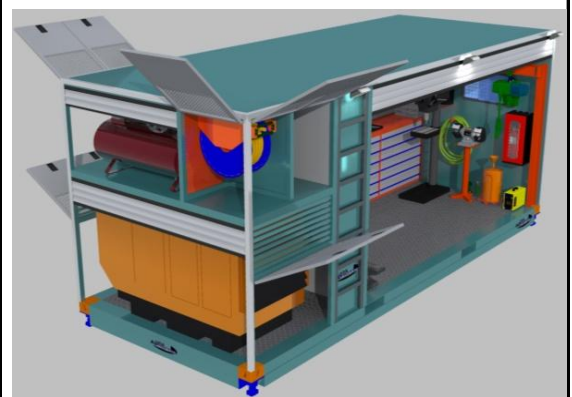
- all the necessary equipment and tools for assistance on field, the Mobile Workshop Unit is suitable for hard off road
- Cover long distances.

The workshop box is removable from the truck deck (container + four twist locks).

The left side is fully opening to facilitate assistance operations.

Air compressor and generator are located in a separate space.

The box is complete with an air circuit **with three outputs** and an electric circuit with four lights.



2. LIFTING BEAM

- Sliding lifting beam mounted on the top of workshop box fitted with a 1.500 Kg capacity hoist.
- This system allows loading into the workshop the mechanical parts to repair.



3. AIR COMPRESSOR

- Air compressor single stage, three phase following the main features:

- Power: 3 kW (4 hp)
- Delivery: 500 l/min (17,6 cfm)
- Pressure: 10 bar (145 PSI)
- Air tank: 200 l
- Speed: 1300 rpm



4. GENERATOR

- Generator, with the following the main features:
- Diesel engine power 18.8 kW (25.5 hp)
- Diesel engine displacement: 2/1248 cm³
- Speed: 3000 rpm
- Diesel engine consumption: 3,5 l/hr
- Three phase power: 16.5 kVA (13.2 kW)/400 V/23.8 A
- Tank capacity: 26 liters.



5. COLUMN DRILLING MACHINE

Following are the main features:

- Heavy duty column drilling machine
- Particularly suitable for carpentry of medium and large sizes.
- The drill is equipped with switch with reversal of the direction of rotation.
- Drilling capacity in steel: Ø 32 mm
- Drilling capacity in cast iron: Ø 40 mm
- Tapping capacity: M 16
- Milling capacity: Ø 50 mm
- Spindle speed: 100 to 2,080 rpm
- Distance column / spindle center: 202 mm
- Maximum distance spindle nose:
- Spindle / work table pieces 550 mm
- Spindle / base 1,250 mm
- Column Ø 115 mm
- Table size 406x363 mm
- Drill Height 1,845 mm
- Basic dimensions: 648 x 412 x 128 mm
- Overall dimensions: 610 x 813 x 1.845
- Power supply: 380 V - 3 Ph
- Motor power: 1 ½ HP, Net weight: 270 kg



7. ACCESSORIES AND TOOLS

7.1 AIR GUN



7.2 TYRE INFLATER GUN WITH GAUGE



7.3 WASHING GUN



7.4 PNEUMATIC SCREWDRIVER



7.5 ELECTRIC DRILL



7.6 SERIES OF DRILLS



7.7 CONICAL DRILL



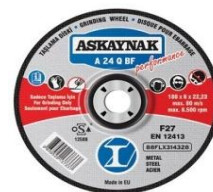
7.8 BENCH GRINDER COMPLETE WITH COLUMN AND WHEELS



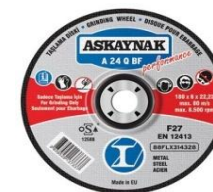
7.9 ANGLE GRINDER



7.10 - 230X7, 0X22 GRINDING WHEELS



7.11 -230X3, 2X22 GRINDING WHEELS



7.12 FULL BOX FOR WELDING AND CUTTING



7.13 OXYGENE/ACETYLENE 10 m HOSE



7.14 UNIVERSAL PLIER



7.15 SOCKET WRENCHES SET



7.16 DOUBLE ENDED SQUARE DRIVE WRENCHES



7.17 DRIVE SOCKET



7.18 -HANDLE WRENCHES WITH JOINTED HEXAGONAL SOCKET 7.19 T-HANDLE SPARK PLUG WRENCHES WITH JOINTED SOCKET



7.20 T-HANDLE WITH JOINTED SPARE DRIVE



7.21 -60 mm MALLET



7.22 HAMMER FOR MECHANICS (1500 gram; 500 gram)

7.23 - 500gram OILER



7.24 FLEXIBLE RETRIEVER WITH MAGNETIC HEAD



7.25 BLADES THICKNESS GAUGES



7.26 LONG CANTILEVER TOOL BOX, FIVE COMPARTMENTS (Empty)



7.27 ASSORTMENT IN SHEET STEEL CASE WITH 22 BIHEXAGONAL SOCKETS, REVERSIBLE RATCHET, T-HANDLE WITH SLIDING SQUARE DRIVE, EXTENSION, UNIVERSAL JOINT.



7.28 TELWIN DYNAMIC-420 BATTERY CHARGER



7.29 PUMP FOR GREASE 8Kg



7.30 PUMP FOR OIL 14Kg



7.31 PIPE WRENCHES (1"; 1" ½; 2")



7.32 METAL BRUSH



7.33 STANDARD SOLDERING IRONS 180WATT



7.34 THREADERS/MALE THREADERS



7.35- 30Kg STEEL ANVIL



7.36 ASSORTMENT IN SHEET STEEL CASE WITH 17 BIHEXAGONAL SOCKETS, REVERSIBLE RATCHET, T-HANDLE WITH SLIDING SQUARE DRIVE, EXTENSION.



7.37= 1/2" X 3/4" ADAPTER



7.38 ADJUSTABLE WRENCH



7.39 GREASE GUN



7.40 VERNIER CALIPER 1/50 mm



7.41 TAPE RULES WITH ABS CASING



7.42 OUTSIDE PULLERS – TWO JAWS



7.43 SERIES OF 6 CONICAL EXTRACTORS



7.44 -600 mm TYRE LEVER	
7.45- 24 x 27 x 32 x 3/4" CROSS TYPE WHEEL NUT WRENCH	
7.46- T BOTTLE JACK	
7.47 CROWBARS (1mt; 1.5 mt)	
7.48 Liters 20 METAL TANK	
7.49 PLASTIC FUNNEL WITH FLEX HOSE	
7.50 FIRST AID BOX FOR 2 PEOPLE	

7.51 FIRE EXTINGUISHER (POWDER TYPE) Kg.6



7.52 PLIERS WITH 90° BENT NOSE FOR EXTERNAL CIRCLIPS
(19-60; 40/100)



7.53 PLIERS WITH STRAIGHT NOSE FOR EXTERNAL CIRCLIPS
(19-60; 40/100)



7.54 PLIERS WITH 90° BENT NOSE FOR INTERNAL CIRCLIPS (19-
60; 40/100)



7.55 PLIERS WITH STRAIGHT NOSE FOR INTERNAL CIRCLIPS
(19-60; 40/100)



7.56 PLIERS FOR EXTERNAL SNAP RINGS



7.57 PLIERS WITH FLAT KNURLED JAWS FOR EXTERNAL
RINGS



7.58 FLAT EXTRA LONG NOSE PLIERS WITH STRAIGHT JAWS



7.59 HEAVY DUTY DIAGONAL CUTTING NIPPERS



7.60 HACKSAW (MODEL FOR 300mm BLADES)



7.61 BLADE FOR HACKSAW



7.62 PINCERS



7.63 COMBINATION PLIERS



7.64 BOX JOINT ADJUSTABLE PLIERS



7.65 LOCK GRIP PLIERS WITH CONCAVE JAWS



7.66 LOCK GRIP PLIERS WITH SLIDING UPPER JAWS



7.67 SCISSORS (ELECTRICIAN TYPE)



7.68 TUBE CUTTER FOR STEEL AND CAST IRON TUBES



7.69 CRIMPING PLIERS FOR NON-INSULATED OPEN TERMINALS



7.70 CRIMPING PLIERS FOR PRE-INSULATED TERMINALS



7.71 CRIMPING PLIERS FOR CABLE TIP TERMINALS



7.72 UTILITY KNIFE WITH SNAP-OFF BLADES



7.72 SPARE BLADES (100 pcs)



7.73 SET OF TWENTY-SIX COMBINATION WRENCHES



7.74 RIBBED CHISEL (200; 300)



7.75 CHISEL



7.76 SET OF SEVEN PIN PUNCHERS



7.77 CENTRE PUNCHER



7.78 SET OF NINE LONG ANGLED HEXAGON KEYS WITH SPHERICAL HEAD



7.79 SET OF NINE LONG ANGLED HEXAGON KEYS WITH SPHERICAL HEAD – INCH SIZES



7.80 SET OF TWELVE SMALL DOUBLE-ENDED OPEN JAW WRENCHES



7.81 SET OF FOURTEEN T-HANDLE HEXAGON KEYS



7.82 ANGLED HEXAGON KEYS (12; 14; 17; 19)



7.83 ANGLED HEXAGON KEYS INCH SIZES (7/16"; 1/2")



7.84 RIGID SCRAPER



7.85 CARBIDE SCRIBER



7.86 BACK SQUARES (200; 300)



7.87 TYRE LEVER



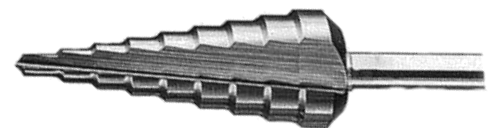
7.88 STRAP WRENCH FOR OIL FILTERS



7.89 – 3 ” PIPE WRENCH



7.90 STEP DRILLS (24; 25; 27; 30; 35)



7.91 STEEL GRIPS (70.20; 70.50)



7.92 STANDARD DIGITAL MULTIMETER



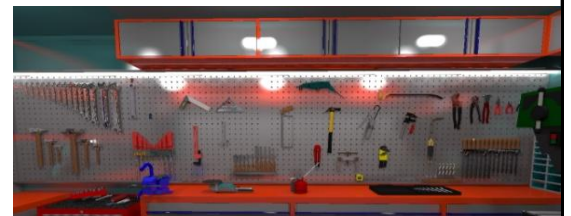
7.93 SINGLE ENDED OPEN JAWS WRENCHES (36; 41; 46; 50; 55; 60; 65; 70)



7.94 SET OF TEN SCREW DRIVER FOR SLOT HEAD AND PHILLIPS SCREWS



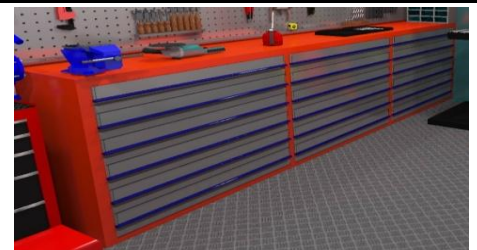
7.95 CASE HOLDER BASE



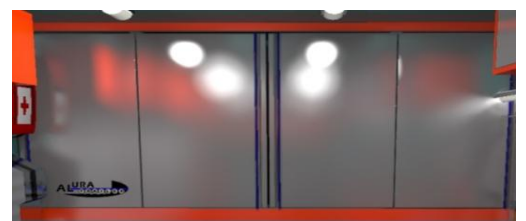
7.96 CASE BAR



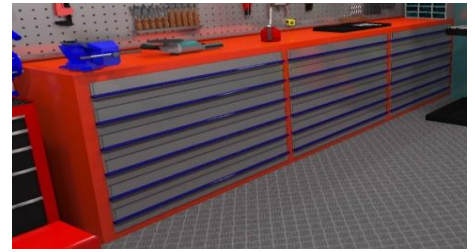
7.97 COMPOSITION WITH LONG DRAWERS



7.98 COMPOSITION WITH THREE DRAWERS



7.99 COMPOSITION WITH FIVE DRAWERS



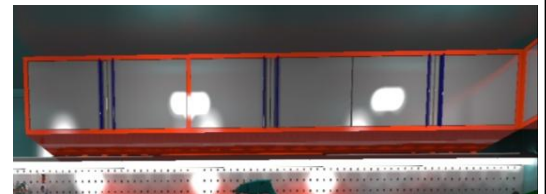
7.100 COMPOSITION WITH FOUR DRAWERS



7.101 ROLL HOLDER WITH PAPER CUTTER



7.102 SHELF



7.103 METAL SHEET BENCH









7.104 VICE WITH STEEL JAWS CLAMPS



7.105 GRINDER



7.106 AIRTEC PNEUMATIC GRINDER	
7.107 STICK WITH HANDLE kg.5	
7.108 SUPERIOR WELDING TELWIN C/m.5 of CABLE	
7.109 VICE PRESS DRILL TYPE EXTRA LTF-0260P0200	
7.110 LED LAMP	
7.111 EXTINGUISHER BOX DOOR KG.6	
7.112 ALUMINIUM LADDER	

7.113 EXTENSIONS WITH PLUGS 220V \ 380V -100 MT.

